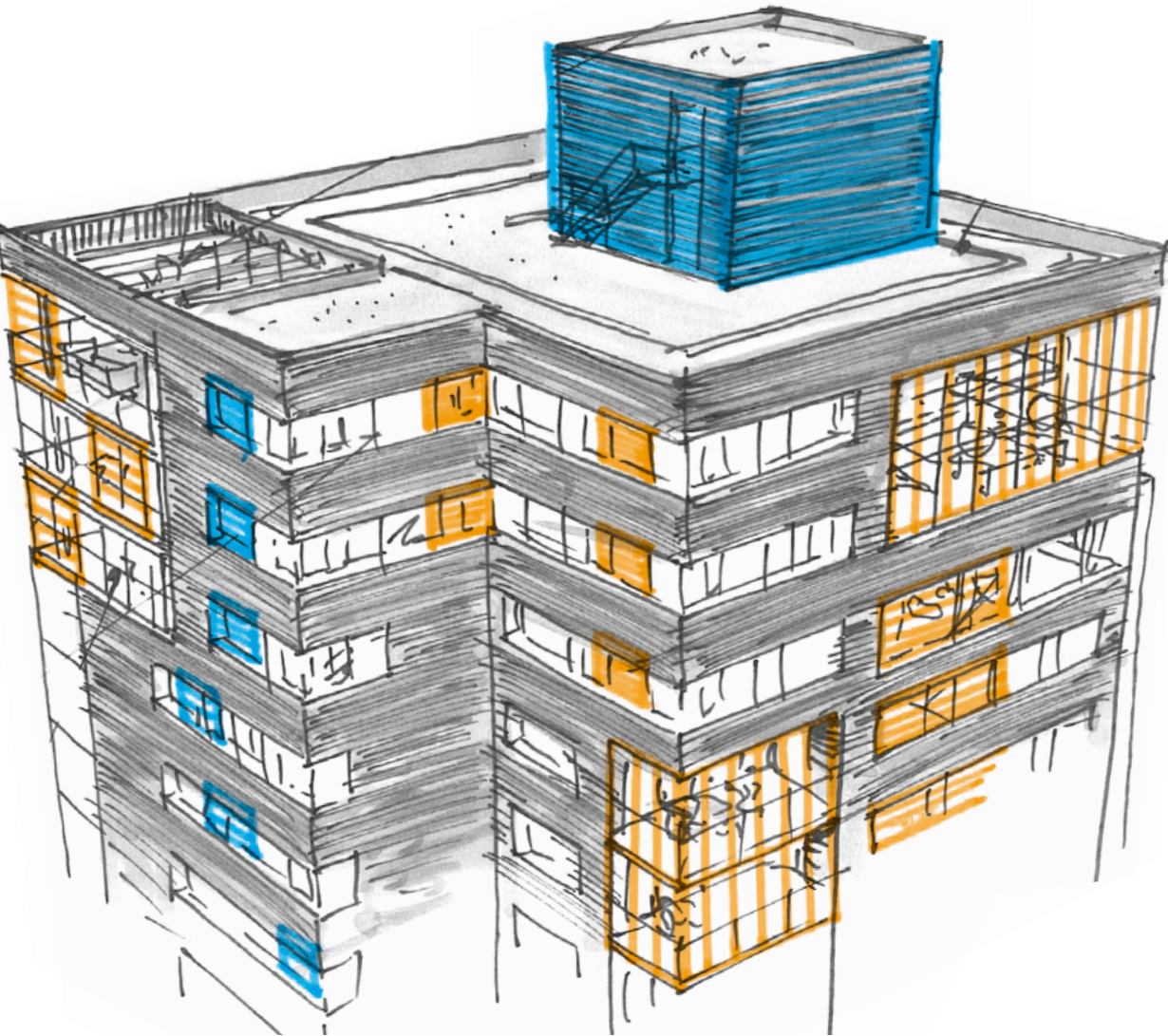


Data Centre Ventilation Solutions

High-Performance Ventilation & Solar Shading Systems



**Natural & Intensive
ventilation**



**High-performance weather
& intrusion resistance**

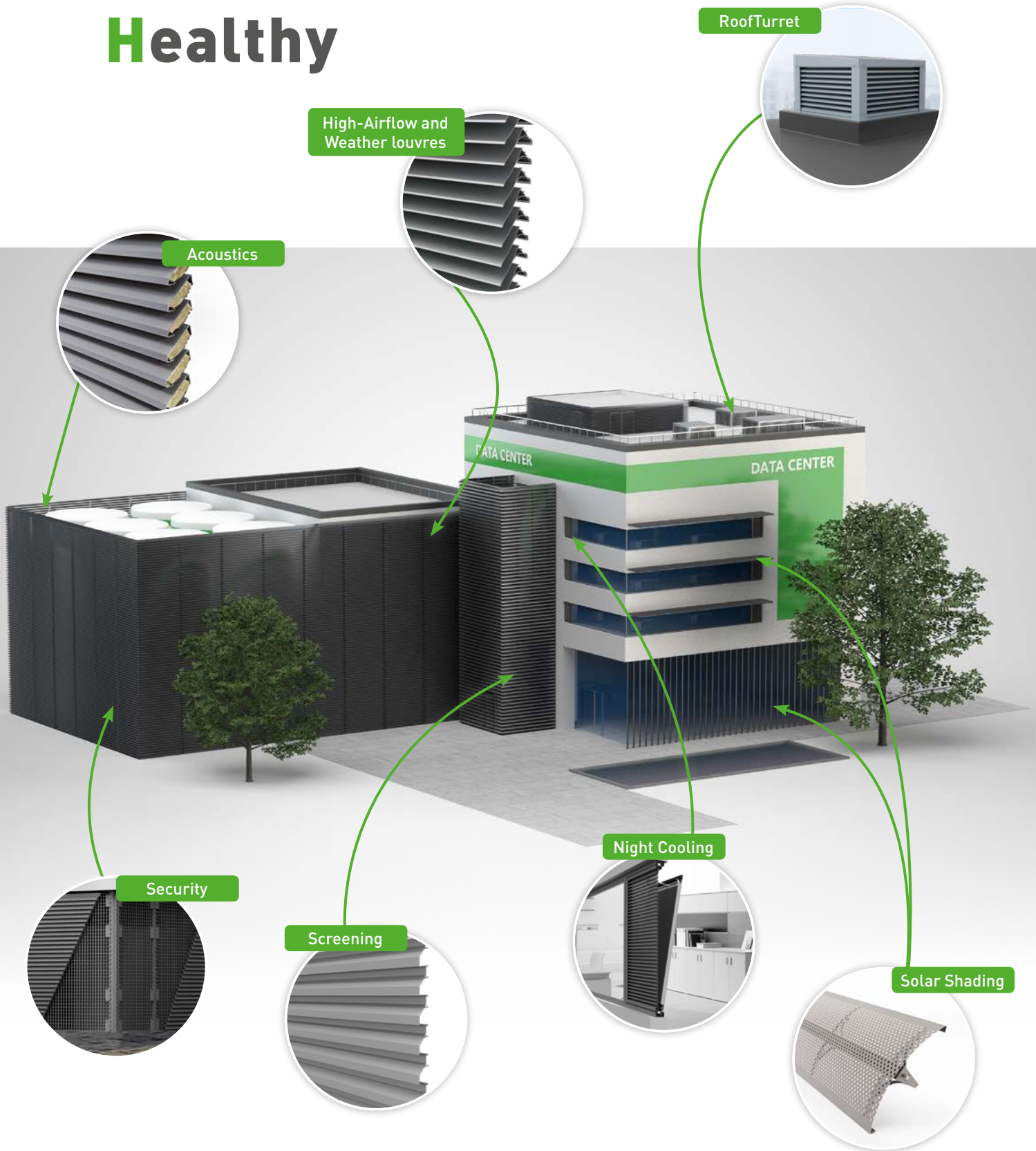


**Louvre Walls
& Doors**

DUCO

We inspire at www.duco.eu

Safe Silent Healthy



RoofTurret

High-Airflow and
Weather louvres

Acoustics

DATA CENTER

DATA CENTER

Security

Screening

Night Cooling

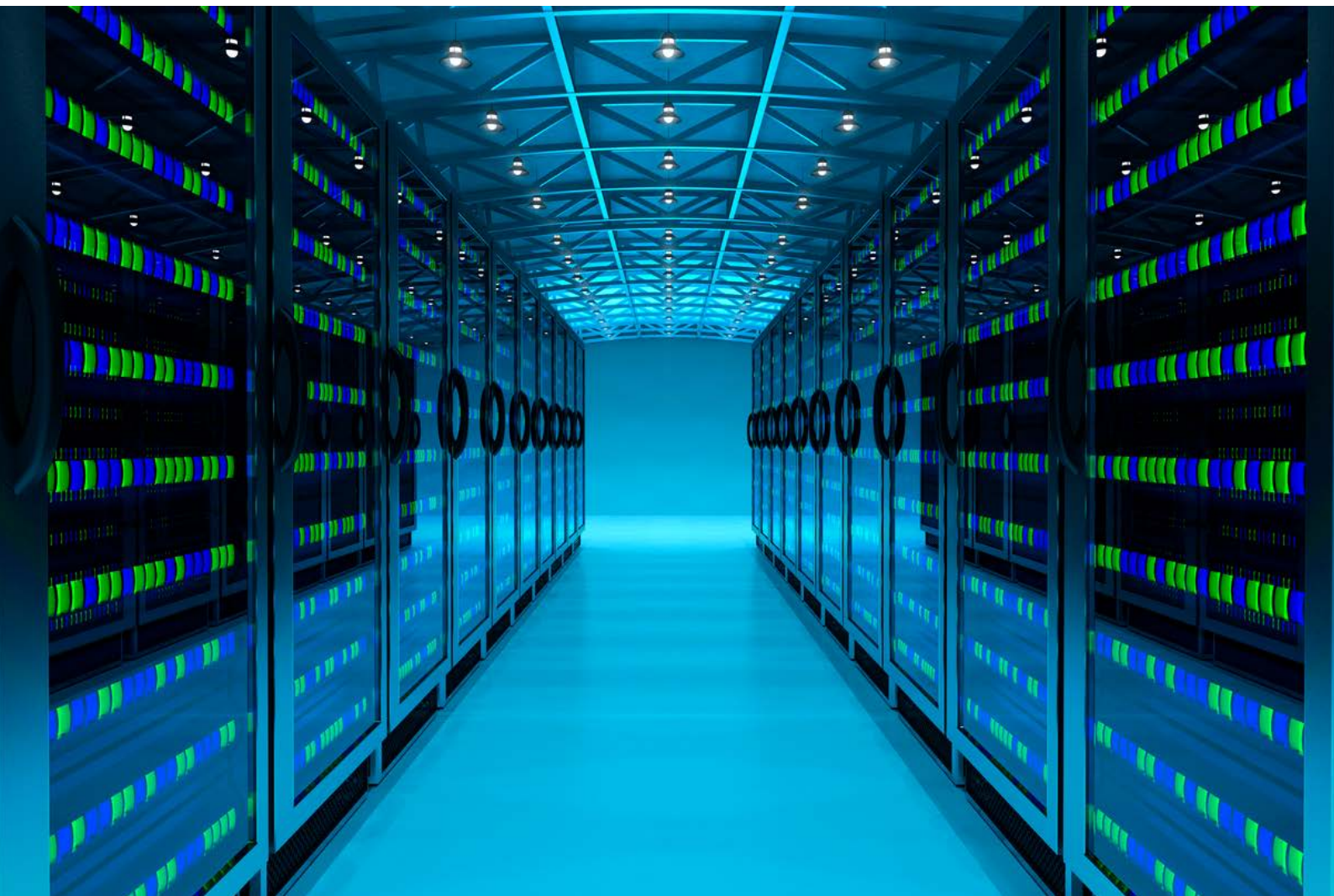
Solar Shading

INTRODUCTION

The heat generated by the equipment inside Data Centres, requires high levels of ventilation to reduce temperatures within the building. With the increasing demand for data centres to meet these day-to-day requirements, the need for ventilation and shading solutions has never been greater.

DUCO can assist by providing efficient, high-end ventilation products, such as louvres, acoustic ventilation and solar shading, guaranteeing an effective natural solution of the internal space of the data centres. This will assist in avoiding overheating and reduce energy consumption considerably.

Data centres are not intended for prying eyes of the public. Use of DUCO Louvre Wall or Solar Shading can provide a visible screen from external view and ensure privacy of the building is maintained.

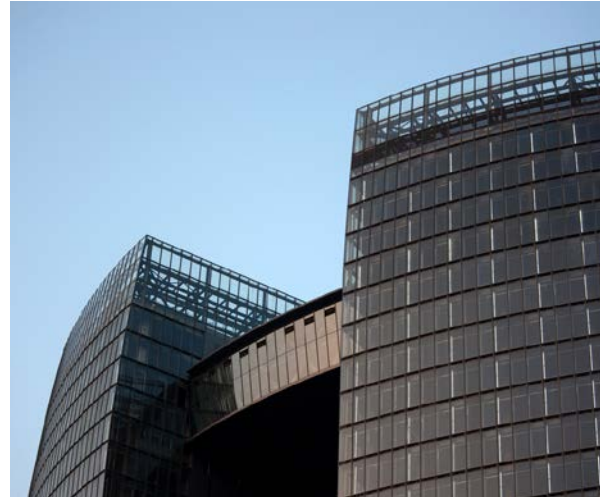


SOLUTIONS

DucoWall Louvres

The comprehensive DucoWall Louvre range not only provides solutions for these particular ventilation needs, but also provides for many other key considerations, such as:

- Weather resistance – W130HP Class A performance
- Intrusion resistant – RC2 rated security patented solution
- Acoustic attenuation – Single and double bank blade options for noise reduction



DucoWall Screening

The aluminium louvre wall system, DucoWall Screening, is eminently suitable for projects where the wall acts primarily as screening.

- Cost effective options to shield open plant equipment
- Quick assembly and smooth installation
- High span and high airflow

DucoRoof Turret

Duco Roof Turrets provide aesthetic concealment of air vents in roofs, and ensures adequate purge ventilation of the screened areas.

- Made to measure
- High ventilation values
- Insect resistant



RC2: DUCO's patented intrusion-resistant solution

DUCO can offer their innovative intrusion-resistant solution to improve security, being suitable for both LouvreWall and LouvreDoor ranges.

Tested in accordance with European Standard (EN1627 & NEN 5096C+2), it is certified to Resistant Class 2.



Louvre Doors

Choose from the DucoDoor Wall, DucoDoor Louvre and DucoDoor Grille in the DUCO range to find a louvre that meets the building's aesthetic, design and performance requirements. DUCO's louvre doors are suitable for fitting in technical areas – either on Ground Floor or above with both ventilated or as a (draught-proof) false louvre door. All doors guaranteed to deliver a sleek and uniform frontage.



DucoDoor Grille

- Free-standing louvre door
- Options: RC2 and draughtproof
- Up to 180° opening



DucoDoor Louvre

- Door in louvre wall
- Options: RC2 and draughtproof
- Up to 180° opening



DucoDoor Wall

- Door in louvre wall
- Seamlessly integrated
- Sleek and uniform pattern

Transfer Grilles

- ✓ Easy and quick installation in doors and walls
- ✓ Adjustable frame depth
- ✓ Fixable with or without a counterframe

NightVents

- ✓ Manual and Motor control
- ✓ High flow rates for intake and exhaust of air
- ✓ Insulated to improve thermal performance

Dampers

- ✓ High airflow rate
- ✓ Designed for wall mounted applications
- ✓ Suitable for adjustable extract

Acoustic Louvres and Window Ventilators

- ✓ Reducing noise pollution for both internal offices and to external surrounding areas
- ✓ Maintain controlled air flows

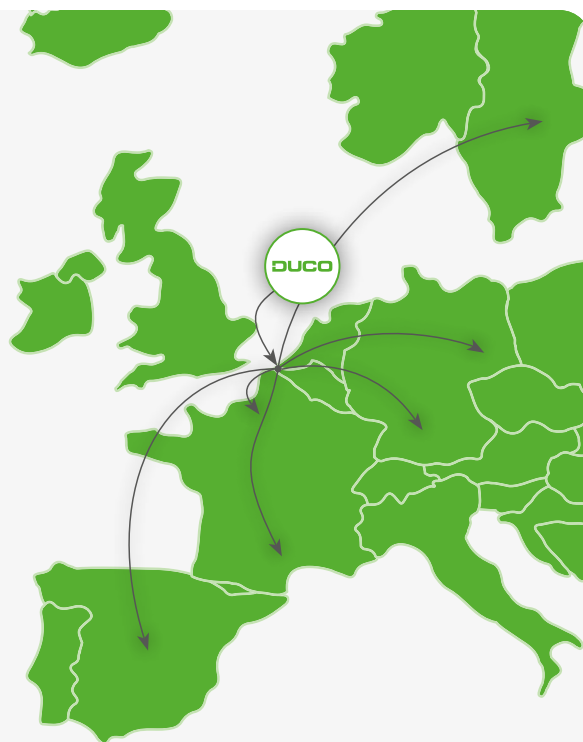
Who are **DUCO**

Founded in 1991 with offices located in Veurne Belgium, DUCO has grown into a key player in the field of natural ventilation and solar shading systems incorporating DUCO Projects.

Data centres are located in many different parts of Europe.

How can **DUCO** help you?

DUCO is able to support you throughout the entire project, including design, calculations (structural, airflow, weatherability, acoustic, solar gain), delivery and installation. We are here to help!



100% UNBURDENED INSTALLATION?

Send us your project!

If you have a project and you are looking for professional advice, please fill in the form on the link below. Please include any project-relevant documents and we will contact you shortly.



www.duco.eu/uk/yourproject

DO YOU NEED GUIDANCE WITH YOUR PROJECT?

Call +32 58 33 00 66
or mail info@duco.eu

DUCO

We inspire at www.duco.eu