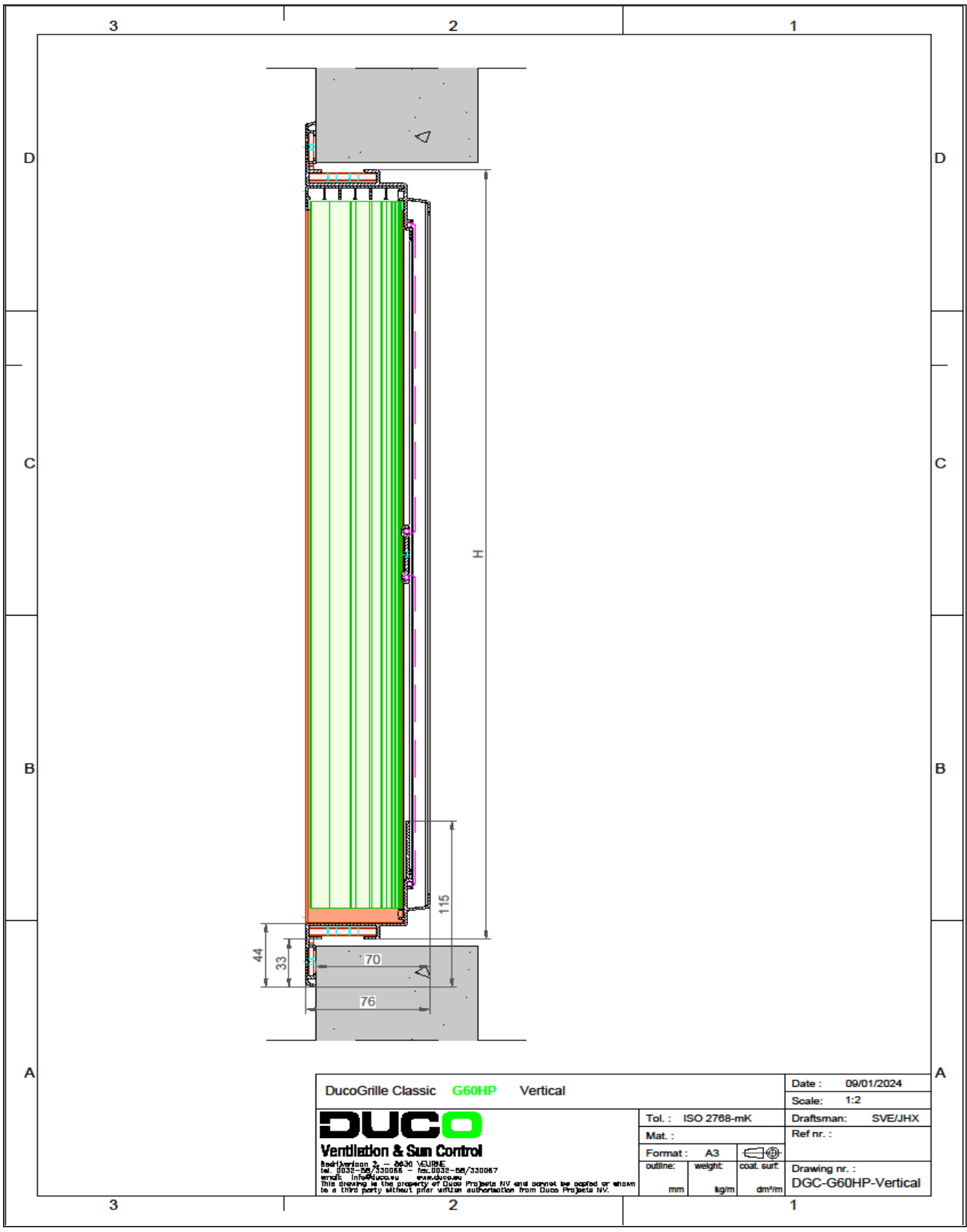




TECHNICAL DATA SHEET



| Type | DucoGrille Classic G 60HP - Vertical | |
|------------------------------|---|----------|
| DESCRIPTION | Vertical louvre "build-in" wall grille. Good water resistance. | |
| SHAPE OF BLADE | 60HP | |
| PITCH | 25 mm | |
| FRAME WIDTH | 44 mm | |
| EQUAL LEG OUTER FRAME | 33 mm | |
| FRAME DEPTH | 76,5 mm | |
| MIN. DIMENSIONS | Width 200 mm, Height 200 mm. Exception on request. | |
| MESH | <ul style="list-style-type: none"> - standard with insectmesh 2.3 x 2.3 mm - optional without mesh - optional with bird mesh 6 x 6 mm - optional with bird mesh 20 x 20 mm | |
| DRIP TRAY PROFILE | drip tray integrated in the frame profile, drainage via frame profile | |
| MATERIAL | Aluminium : EN AW-6063 T66 (EN 573-3) Profile thickness : min. 1,5 mm Blades : min. 1,1 mm | |
| SURFACE TREATMENT | <ul style="list-style-type: none"> - standard aluminium anodised (15-20 µm) according Qualanod - polyester powder coated (60-80 µm) according Qualicoat Seaside type A - specific RAL codes and/or textured paint on request | |
| VISUAL FREE AREA | 60% | |
| PHYSICAL FREE AREA | 50% | |
| IP-CLASS (IEC 60529) | IP4X (electrical installation on min. 100 mm) | |
| AIR FLOW DATA | (EN13030) | standard |
| | Ce | 0,193 |
| | K-factor intake | 26,85 |
| | Cd | 0,243 |
| | K-factor exhaust | 16,94 |
| WATER RESISTANCE | (EN13030) | standard |
| | v = 0 m/s | A |
| | v = 0,5 m/s | A |
| | v = 1 m/s | A |
| | v = 1.5 m/s | A |
| | v = 2 m/s | A |
| | v = 2.5 m/s | A |
| | v = 3 m/s | A |
| | v = 3,5 m/s | A |



| | | | |
|--|----------|--------------------|---|
| DucoGrille Classic G60HP Vertical | | | Date : 09/01/2024 |
|  Ventilation & Sun Control <small>Bedrijfsnaam : - 0630 VERBODEN Tel. 0035-26/330066 - fax.0035-26/330067 email: info@duco.nl www.duco.nl</small> <small>This drawing is the property of Duco Projects NV and cannot be copied or shown to a third party without prior written authorization from Duco Projects NV.</small> | | | Scale: 1:2 |
| | | | Draftsman: SVE/JHX |
| Tol. : ISO 2768-mK | | | Ref nr. : |
| Mat. : | | |  Drawing nr. : DGC-G60HP-Vertical |
| Format : A3 | outline: | weight: | |
| mm | kg/m | dm ² /m | |