

# TECHNICAL DATA SHEET



Type	DucoGrille Classic G 60HP	
DESCRIPTION	Louvre "build-in" wall grille. Good water resistance.	
SHAPE OF BLADE	60HP	
PITCH	25 mm	
FRAME WIDTH	44 mm	
EQUAL LEG OUTER FRAME	33 mm	
FRAME DEPTH	76,5 mm	
MIN. DIMENSIONS	Width 200 mm, Height 200 mm. Exception on request.	
REACTION TO FIRE	A2-s1,d0 (EN13501-1)	
MESH	<ul style="list-style-type: none"> <li>- standard with insectmesh 2.3 x 2.3 mm</li> <li>- optional without mesh</li> <li>- optional with bird mesh 6 x 6 mm</li> <li>- optional with bird mesh 20 x 20 mm</li> </ul>	
DRIP TRAY PROFILE	drip tray integrated in the frame profile, drainage via frame profile	
MATERIAL	Aluminium : EN AW-6063 T66 (EN 573-3) Profile thickness : min. 1,5 mm Blades : min. 1,1 mm	
SURFACE TREATMENT	<ul style="list-style-type: none"> <li>- standard aluminium anodised (15-20 µm) according Qualanod</li> <li>- polyester powder coated (60-80 µm) according Qualicoat Seaside type A</li> <li>- specific RAL codes and/or textured paint on request</li> </ul>	
VISUAL FREE AREA	60%	
PHYSICAL FREE AREA	50%	
IP-CLASS (IEC 60529)	IP4X (electrical installation on min. 100 mm)	
AIR FLOW DATA	(EN13030)	standard
	Ce	0,200
	K-factor intake	25,00
	Cd	0,252
	K-factor exhaust	15,75
WATER RESISTANCE	(EN13030)	standard
	v = 0 m/s	A
	v = 0,5 m/s	A
	v = 1 m/s	A
	v = 1.5 m/s	A
	v = 2 m/s	A
	v = 2.5 m/s	C
	v = 3 m/s	D
v = 3,5 m/s	D	

3

2

1

D

D

C

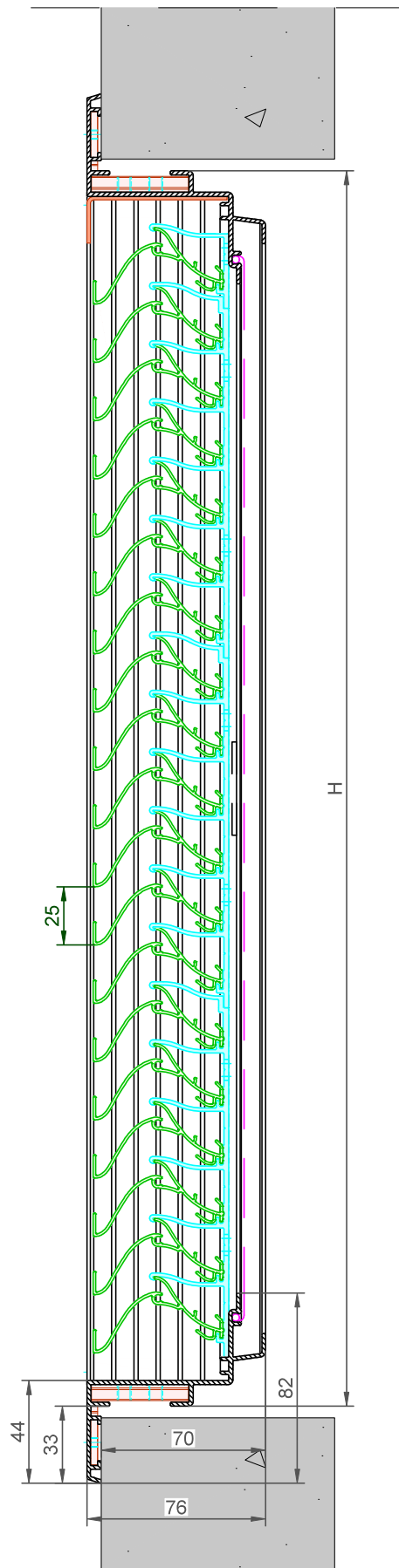
C

B

B

A

A

DucoGrille Classic **G60HP**

Datum : 09/01/2024

Schaal : 1:2

**DUCO**  
Ventilation & Sun Control

Bedrijvenlaan 2 - 8630 VEURNE  
tel. 0032-58/330066 - fax.0032-58/330067  
email: info@duco.eu www.duco.eu

Deze tekening is eigendom van Duco Projects en mag niet gekopieerd  
noch getoond worden aan derden zonder schriftelijke toestemming

Tol. : ISO 2768-mK

Getekend : SVE/JHX

Mat. :

Ref nr. :

Formaat : A3



omtrek

gewicht

lakoppervl.

Tekening nr. :

mm

kg/m

dm²/m

DGC-G60HP

3

2

1