

3

2

1

D

D

C

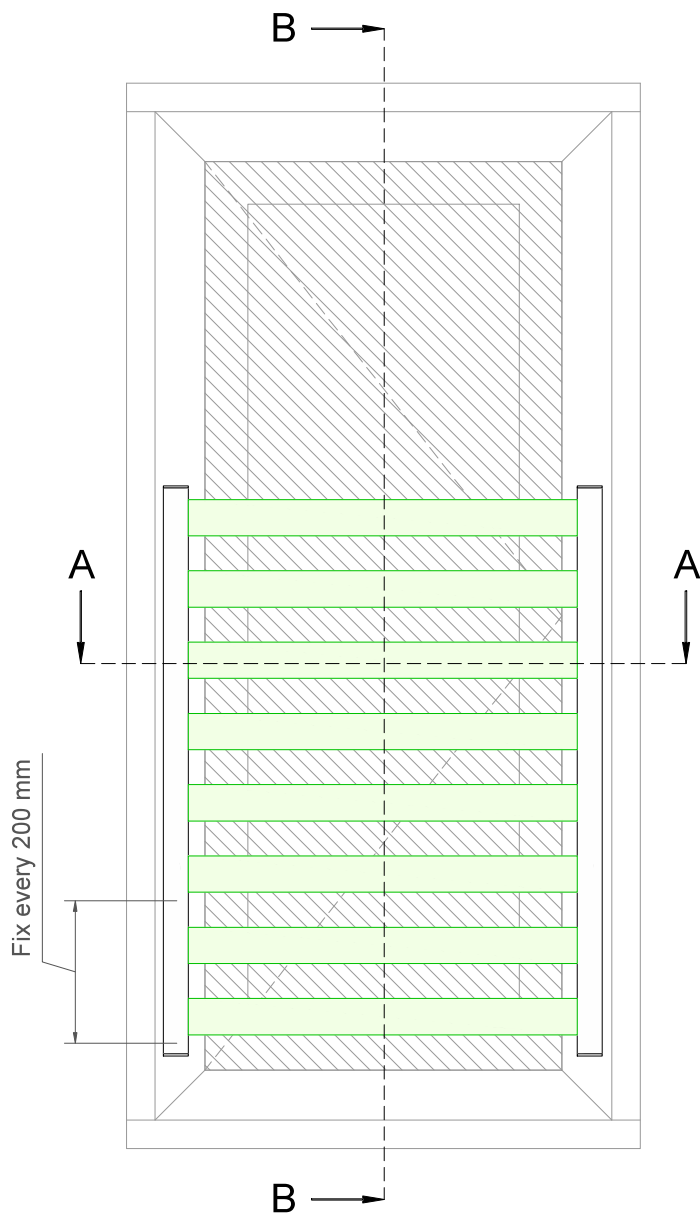
C

B

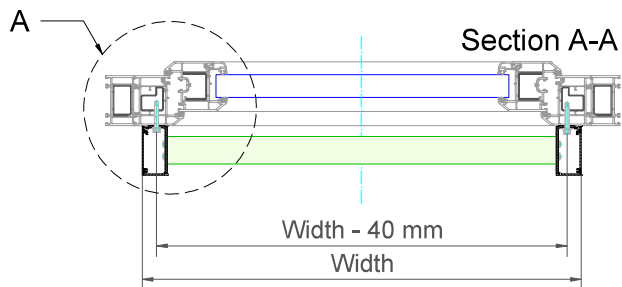
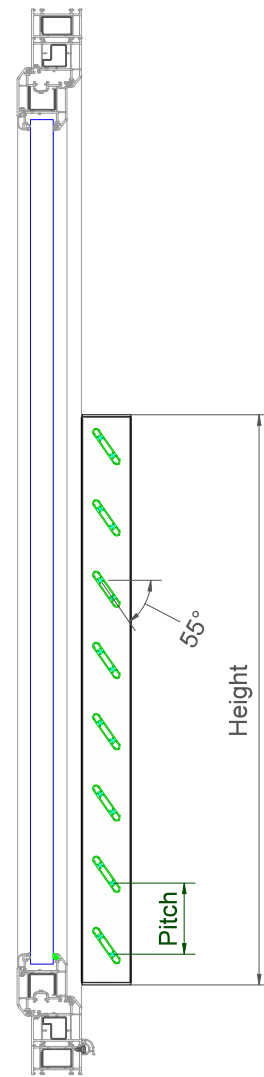
B

A

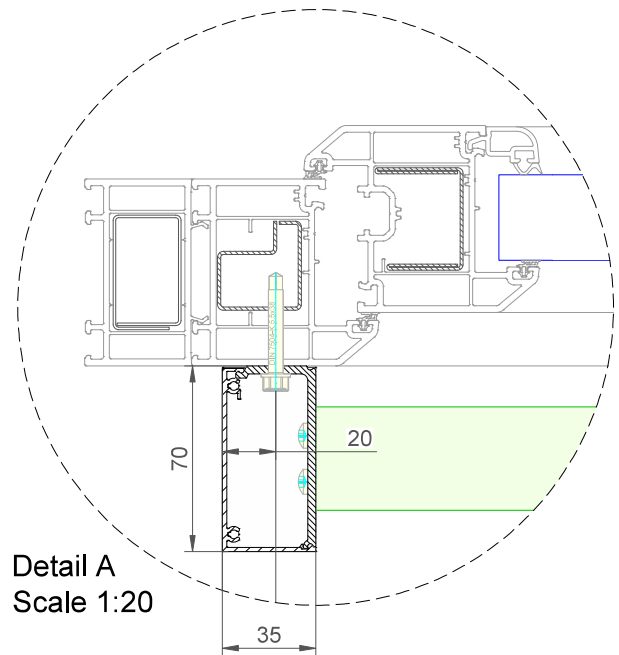
A



Section B-B



Section A-A

Detail A
Scale 1:20**example only - not for construction use**

Duco Barrier Load Louvre - Luxframe 35-70 - 55°

Datum : 27/05/2024

Schaal : 1:7,5

Window profiles for example purposes only.
Check compatibility with window manufacturer

DUCO
Ventilation & Sun Control

Tol. : ISO 2768-mK

Getekend : RTN

Mat. : Aluminium

Ref nr. :

Formaat : A3



Tekening nr. :

In case of PVC windows: screw fixations
should always be anchored in the steel
reinforcement of the frame

Bedrijvenlaan 2, - 8630 VEURNE
tel. 0032-58/330066 - fax.0032-58/330067
email: info@duco.eu www.duco.eu
Deze tekening is eigendom van Duco Projects en mag niet gekopieerd
noch getoond worden aan derden zonder schriftelijke toestemming

omtrek

gewicht

lakoppervl.

Barrier Load Louvre - Luxframe 35-70 - 55°

mm

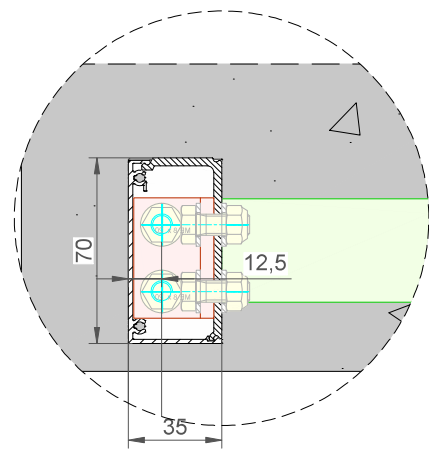
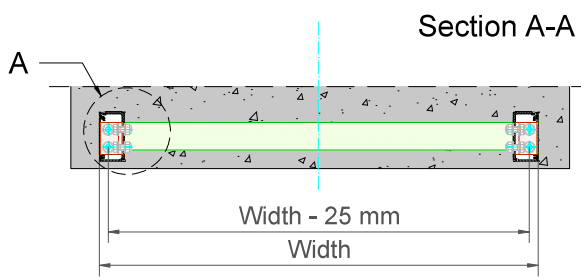
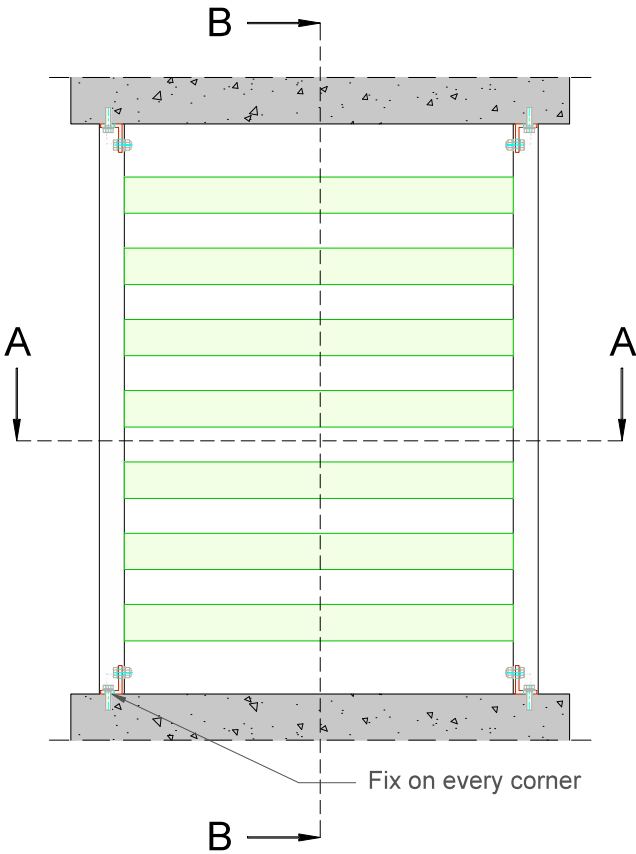
kg/m

dm²/m

3

2

1



example only - not for construction use	Duco Barrier Load Louvre - Luxframe 35-70 - 55° - In Dag	Datum : 27/05/2024	
		Schaal : 1:7,5	
Window profiles for example purposes only. Check compatibility with window manufacturer	 Ventilation & Sun Control <small>Bedrijvenlaan 2, - 8630 VEURNE tel. 0032-58/330066 - fax.0032-58/330067 email: info@duco.eu www.duco.eu Deze tekening is eigendom van Duco Projects en mag niet gekopieerd noch getoond worden aan derden zonder schriftelijke toestemming</small>	Tol. : ISO 2768-mK	Getekend : RTN
In case of PVC windows: screw fixations should always be anchored in the steel reinforcement of the frame		Mat. : Aluminium	Ref nr. :
	Formaat : A3		Tekening nr. : Barrier Load Louvre - Luxframe 35-70 - 55° ID
omtrek	gewicht		
	mm	kg/m	dm²/m