

TECHNICAL DATA SHEET



Type	Duco Barrier Load Louvre - Luxframe 35/70 - 45°		
VISUAL FREE AREA	Fixed panel as barrier load		
SHAPE OF BLADE	60F Barrier Load		
BLADE INCLINATION	45°		
PITCH	To specification barrier load, maximum pitch = 100 mm		
FRAME WIDTH	35 mm		
FRAME DEPTH	70 mm		
MIN. DIMENSIONS	- Width 100mm		
MAX. DIMENSIONS	- Width 1000 mm		
REACTION TO FIRE	A2-s1,d0 (EN13501-1)		
MATERIAL	Aluminium : EN AW-6063 T66 (EN 573-3) Profile thickness : min. 1,5mm		
SURFACE TREATMENT	- polyester powder coated (60-80µm) according Qualicoat Seaside type A - specific RAL codes and/or textured paint on request		
IMPACT RESISTANCE		Fixed on window frame	Fixed on four corners
	EN13049	Class 5	Pending
	NF P08-302	Class H2	Pending
FALL-TROUGH PROTECTION	B03-004	Class A/B/C4/D	Pending
	NEN-EN1991-1-1	Class A/B/C4/D	Pending
	BS6180	Class XI*	Pending

* check calculation file for maximum pitch and width

3

2

1

D

D

C

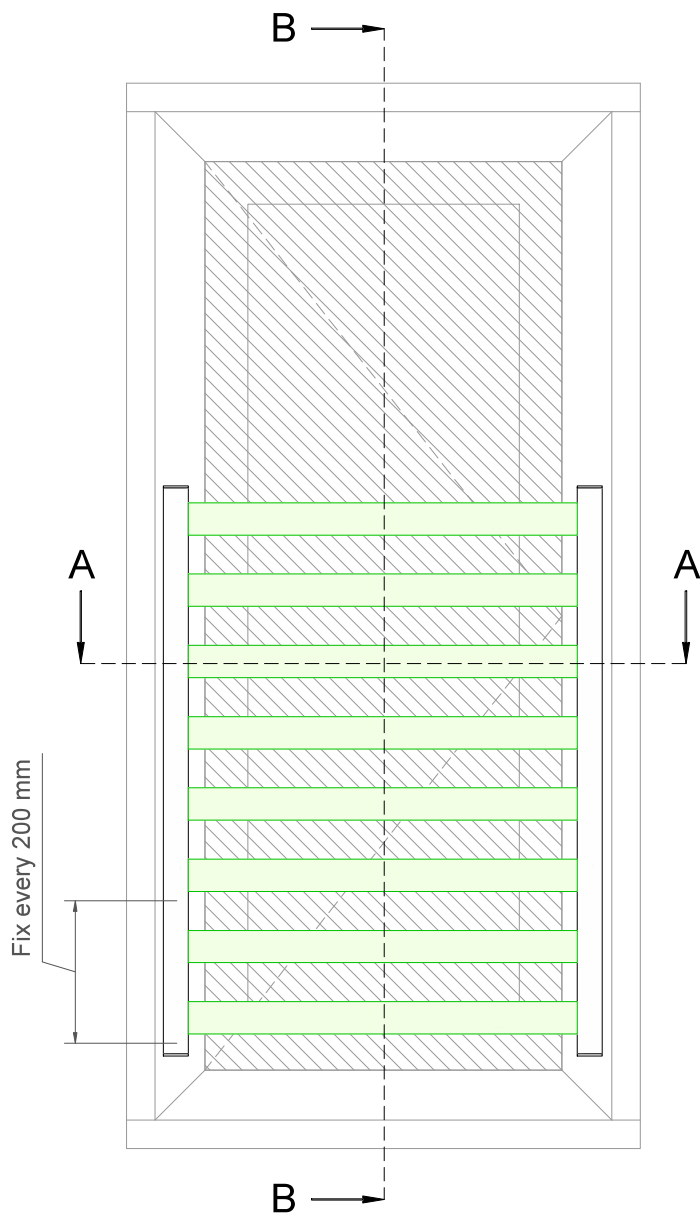
C

B

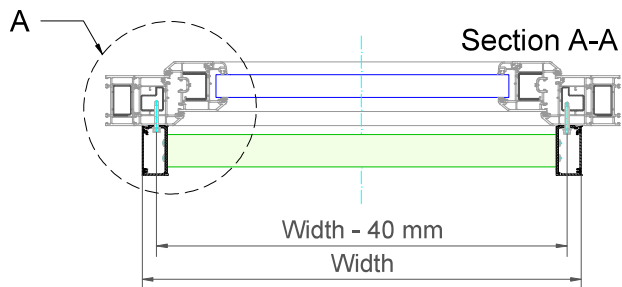
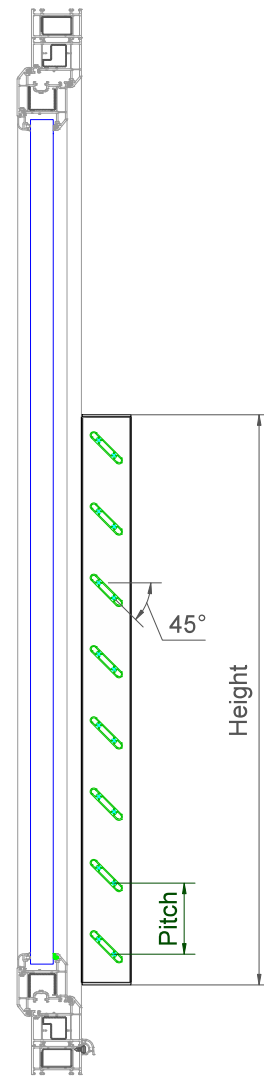
B

A

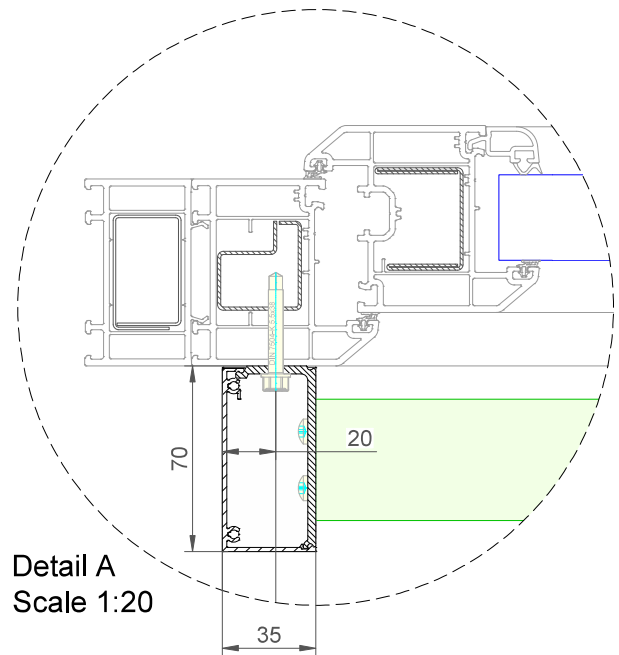
A



Section B-B



Section A-A

Detail A
Scale 1:20**example only - not for construction use**

Duco Barrier Load Louvre - Luxframe 35-70 - 3°

Datum : 22/04/2024

Schaal : 1:7,5

Window profiles for example purposes only.
Check compatibility with window manufacturer

DUCO
Ventilation & Sun Control

Bedrijvenlaan 2, - 8630 VEURNE
tel. 0032-58/330066 - fax.0032-58/330067
email: info@duco.eu www.duco.eu
Deze tekening is eigendom van Duco Projects en mag niet gekopieerd
noch getoond worden aan derden zonder schriftelijke toestemming

Tol. : ISO 2768-mK

Getekend : RTN

Mat. : Aluminium

Ref nr. :

Formaat : A3



Tekening nr. :

In case of PVC windows: screw fixations
should always be anchored in the steel
reinforcement of the frame

omtrek

gewicht

lakoppervl.

Barrier Load Louvre - Luxframe 35-70 - 3°

mm

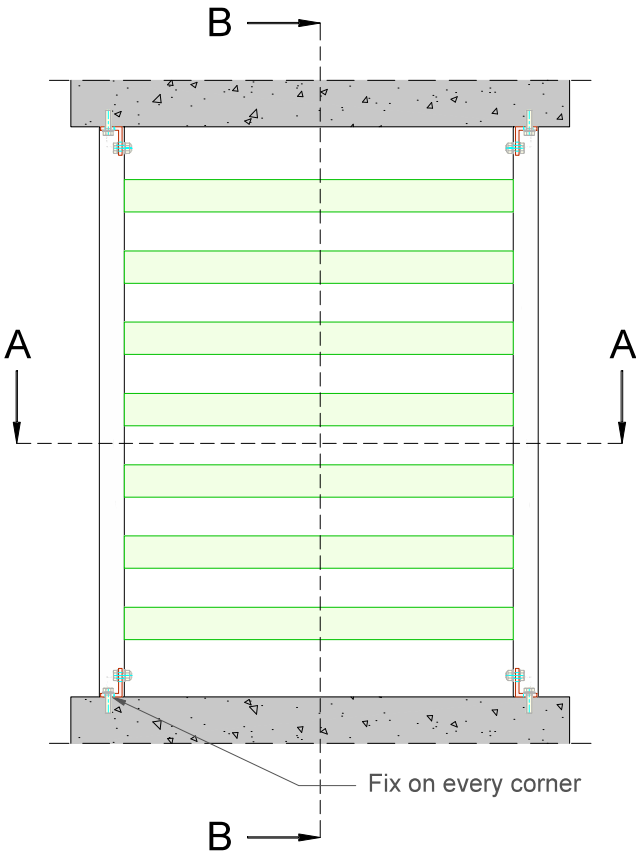
kg/m

dm²/m

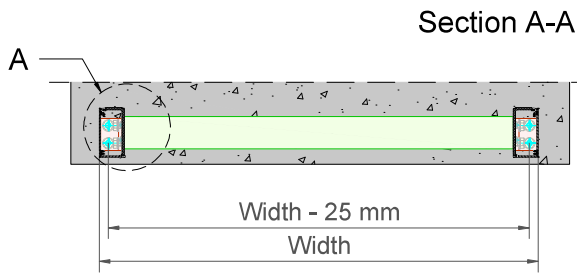
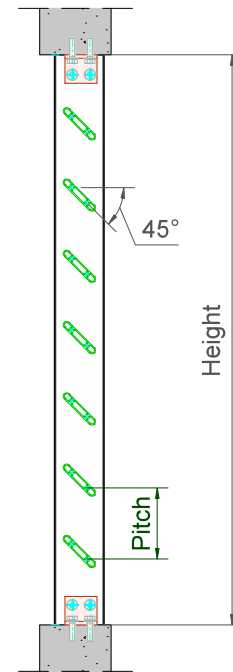
3

2

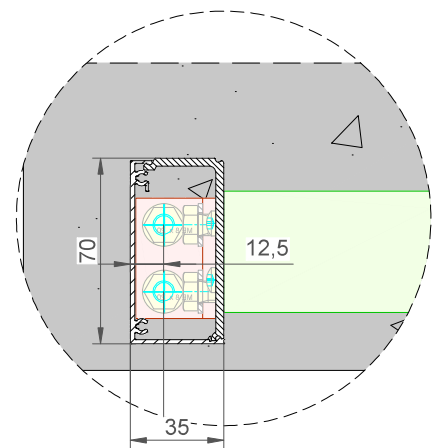
1



Section B-B



Section A-A



Detail A
Scale 1:20

example only - not for construction use

Duco Barrier Load Louvre - Luxframe 35-70 - 3° - In Dag

Datum : 22/04/2024

Schaal : 1:7,5

Window profiles for example purposes only.
Check compatibility with window manufacturer



Tol. : ISO 2768-mK

Getekend : RTN

Mat. : Aluminium

Ref nr. :

Formaat : A3



Tekening nr. :

In case of PVC windows: screw fixations
should always be anchored in the steel
reinforcement of the frame

Bedrijvenlaan 2, - 8630 VEURNE
tel. 0032-58/330066 - fax.0032-58/330067
email: info@duco.eu www.duco.eu
Deze tekening is eigendom van Duco Projects en mag niet gekopieerd
noch getoond worden aan derden zonder schriftelijke toestemming

omtrek

gewicht

lakoppervl.

Barrier Load Louvre - Luxframe 35-70 - 3° ID

mm

kg/m

dm²/m